

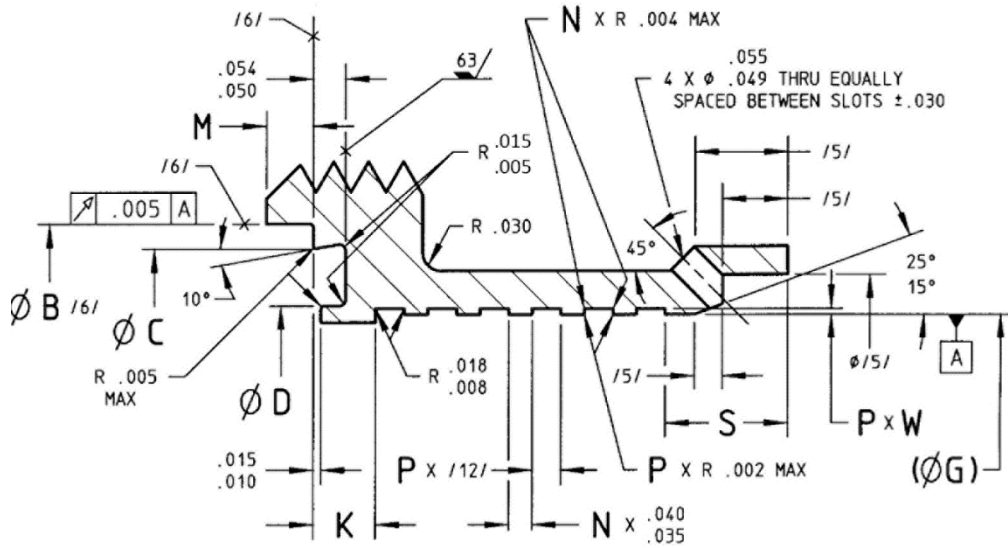
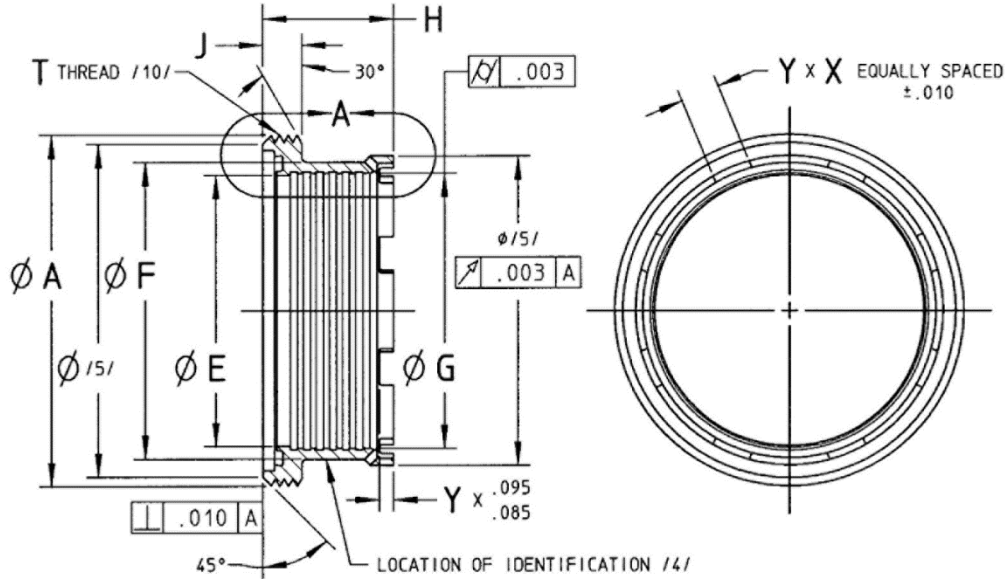
FEDERAL SUPPLY CLASS
4730

REV.
F

RATIONALE

CORRECT DIMENSIONAL ERROR OF O-RING CORNER RADII.

AS1733™

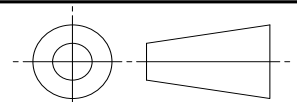


ENLARGED VIEW A

FIGURE 1 - BODY

SAE values your input. To provide feedback on this Technical Report, please visit <http://standards.sae.org/AS1733F>

THIRD ANGLE PROJECTION



CUSTODIAN: G-3

PROCUREMENT SPECIFICATION: AS1730 /3/



AEROSPACE STANDARD

BODY, COUPLING, RIGID, FIXED CAVITY, THREADED, FERRULE TYPE TUBE ENDS, TYPE II

AS1733™
SHEET 1 OF 4

REV.
F

SAE Technical Standards Board Rules provide that: "This report is published by SAE to advance the state of technical and engineering sciences. The use of this report is entirely voluntary, and its applicability and suitability for any particular use, including any patent infringement arising therefrom, is the sole responsibility of the user." SAE reviews each technical report at least every five years at which time it may be revised, reaffirmed, stabilized, or cancelled. SAE invites your written comments and suggestions.

ISSUED 1984-01 REAFFIRMED 2015-01 REVISED 2019-12

TABLE 1 - BODY DIMENSIONS

BASIC NO. AS1733 SIZE CODE /14/	(TUBE SIZE)	THREAD T PER FED-STD-H28/2 OR ASME B1.1 /10/ MOD	A	B	C	D	E	F	G	G TOL	H
			+0.05 -0.00	+0.05 -0.00	+0.10 -0.00	+0.00 -0.10	+0.05 -0.00	+0.05 -0.00			
04	.250	.687-12 UN-2A	.680	.529	.480	.298	.233	.375	.254	+0.05/-0.00	.720
05	.312	.750-12 UN-2A	.743	.580	.535	.353	.295	.437	.316	+0.05/-0.00	.720
06	.375	.812-12 UN-2A	.805	.635	.590	.408	.358	.500	.379	+0.05/-0.00	.720
08	.500	.937-12 UN-2A	.930	.762	.716	.534	.483	.625	.504	+0.05/-0.00	.720
10	.625	1.062-12 UN-2A	1.055	.900	.850	.668	.609	.750	.630	+0.05/-0.00	.735
12	.750	1.250-12 UNF-2A	1.243	1.033	.984	.802	.734	.890	.755	+0.05/-0.00	.735
16	1.000	1.500-12 UNF-2A	1.493	1.284	1.235	1.053	.984	1.142	1.005	+0.05/-0.00	.735
20	1.250	1.750-12 UN-2A	1.743	1.534	1.485	1.303	1.235	1.392	1.256	+0.05/-0.00	.735
24	1.500	2.000-12 UN-2A	1.993	1.783	1.735	1.553	1.480	1.642	1.506	+0.05/-0.00	.825
28	1.750	2.250-12 UN-2A	2.243	2.045	1.965	1.783	1.730	1.895	1.756	+0.05/-0.00	.835
32	2.000	2.500-12 UN-2A	2.493	2.292	2.235	2.053	1.981	2.145	2.006	+0.05/-0.00	.835
36	2.250	2.750-12 UN-2A	2.743	2.545	2.485	2.283	2.231	2.395	2.257	+0.05/-0.00	.835
40	2.500	3.000-12 UN-2A	2.993	2.800	2.713	2.531	2.481	2.645	2.507	+0.05/-0.00	.835
44	2.750	3.250-12 UN-2A	3.243	3.045	2.961	2.781	2.731	2.895	2.757	+0.05/-0.00	.835
48	3.000	3.625-12 UN-2A	3.618	3.395	3.340	3.158	2.979	3.145	3.007	+0.05/-0.00	.785
56	3.500	4.125-12 UN-2A	4.118	3.895	3.840	3.658	3.479	3.645	3.509	+0.05/-0.00	.785
64	4.000	4.625-12 UNS-2A /10/	4.603	4.395	4.340	4.158	3.979	4.155	4.009	+0.05/-0.00	.770
72	4.500	5.125-12 UNS-2A /10/	5.103	4.895	4.840	4.658	4.479	4.655	4.509	+0.06/-0.00	.950
80	5.000	5.625-12 UNS-2A /10/	5.602	5.378	5.325	5.143	4.979	5.155	5.009	+0.06/-0.00	.950



AEROSPACE STANDARD

BODY, COUPLING, RIGID, FIXED CAVITY, THREADED,
FERRULE TYPE TUBE ENDS, TYPE IIAS1733™
SHEET 2 OF 4REV.
F